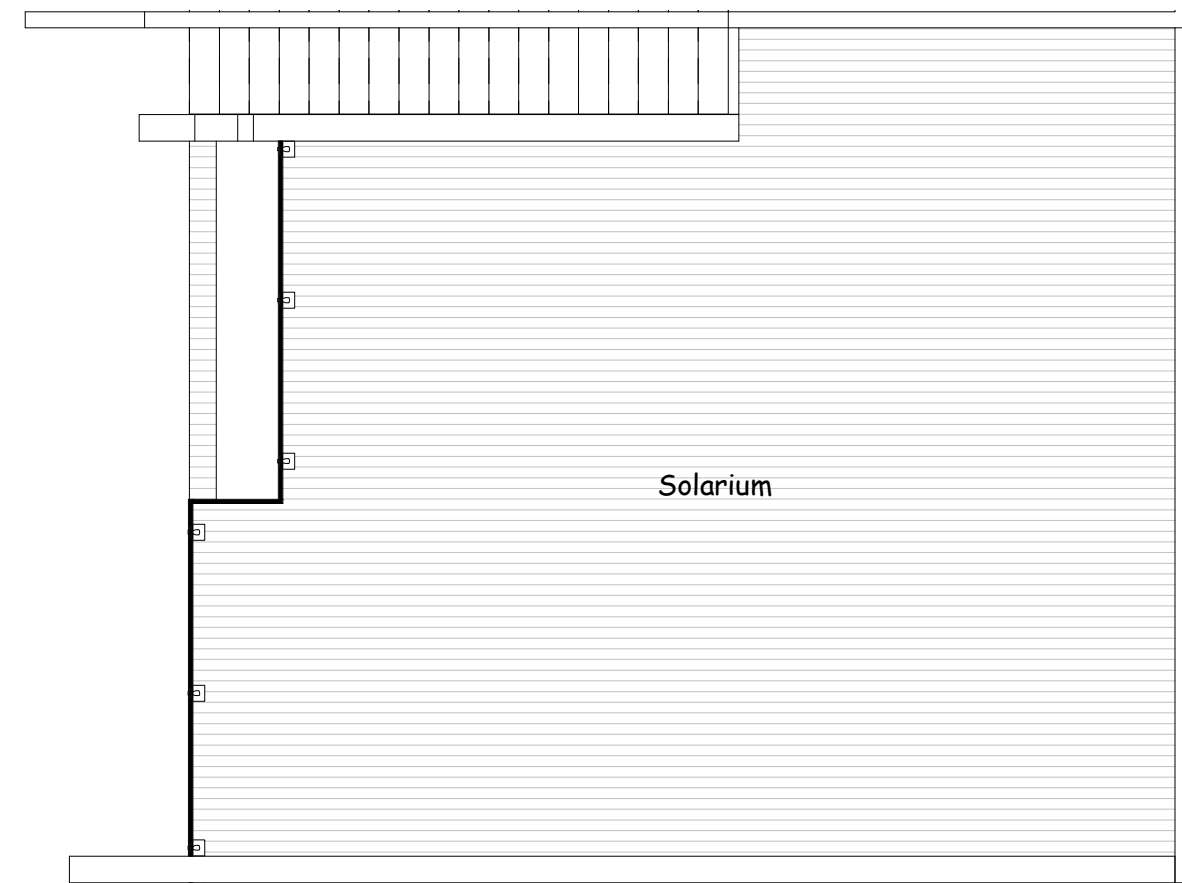
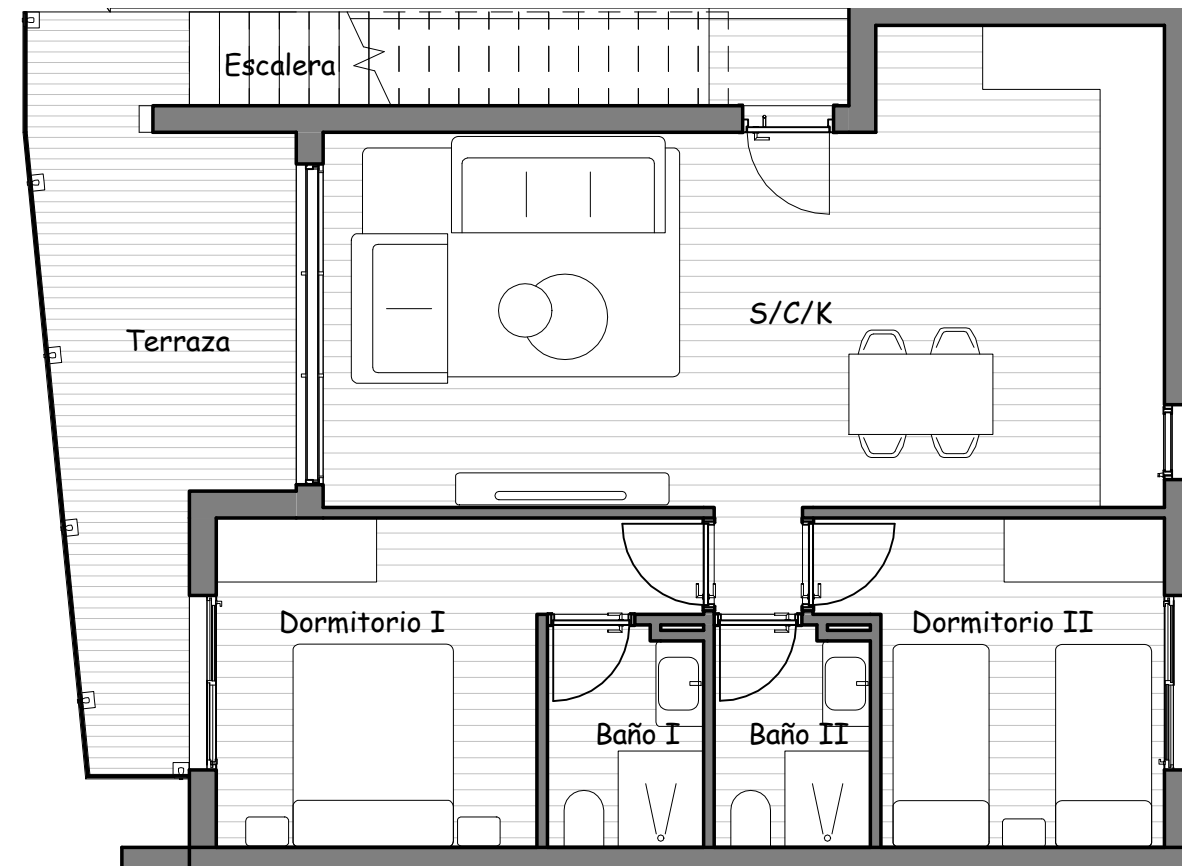


| SUPERFICIES | |
|----------------------|----------------------------|
| Salón/Comedor/Cocina | 35,59m ² |
| Dormitorio I | 12,50m ² |
| Dormitorio II | 10,24m ² |
| WC I | 3,52m ² |
| WC II | 3,52m ² |
| Terraza | 12,98m ² |
| Escalera | 5,40m ² |
| Solarium | 68,21m ² |
| TOTAL | 151,96m² |



RESIDENCIAL SAOCO

P1 N°304