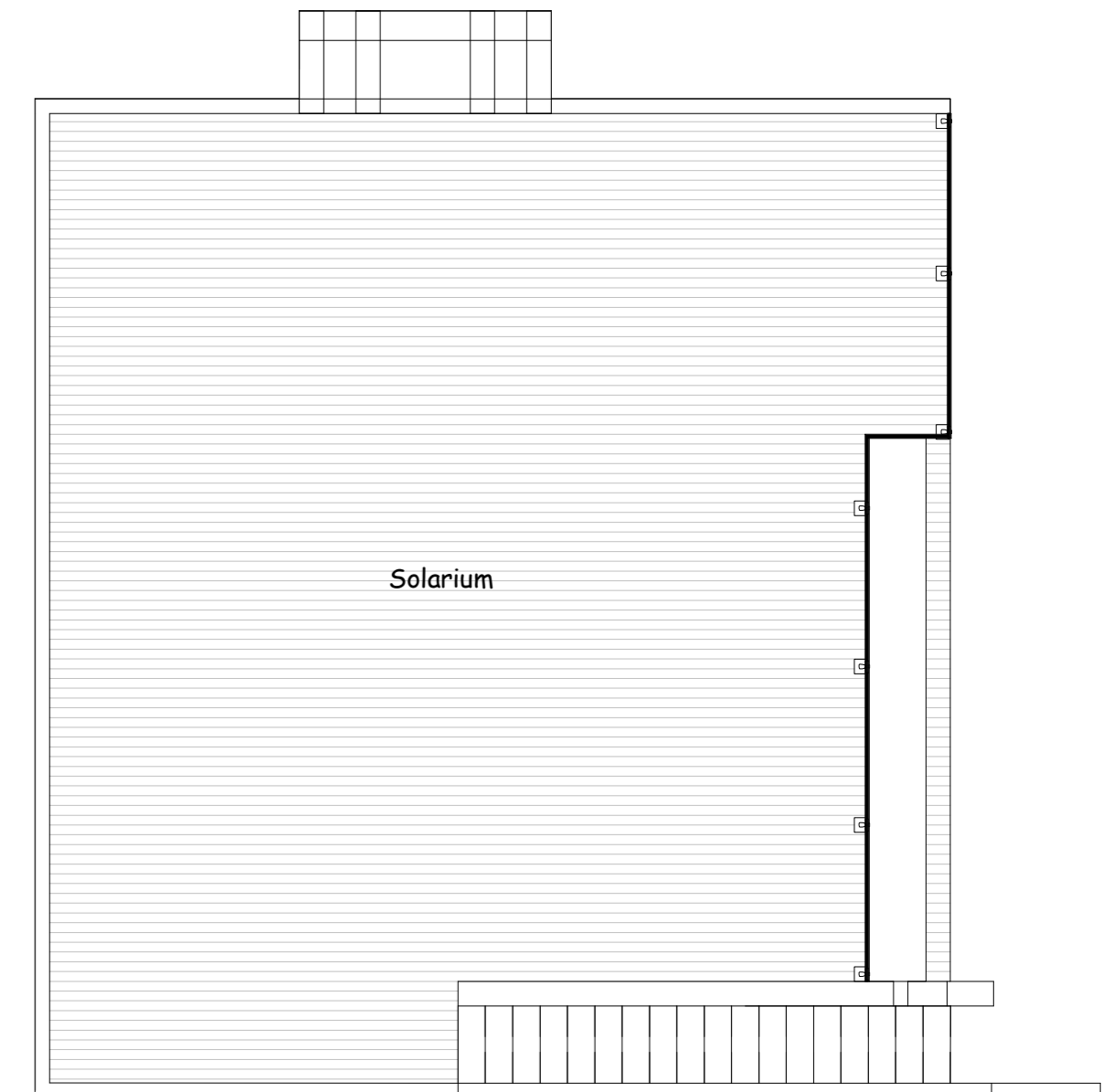
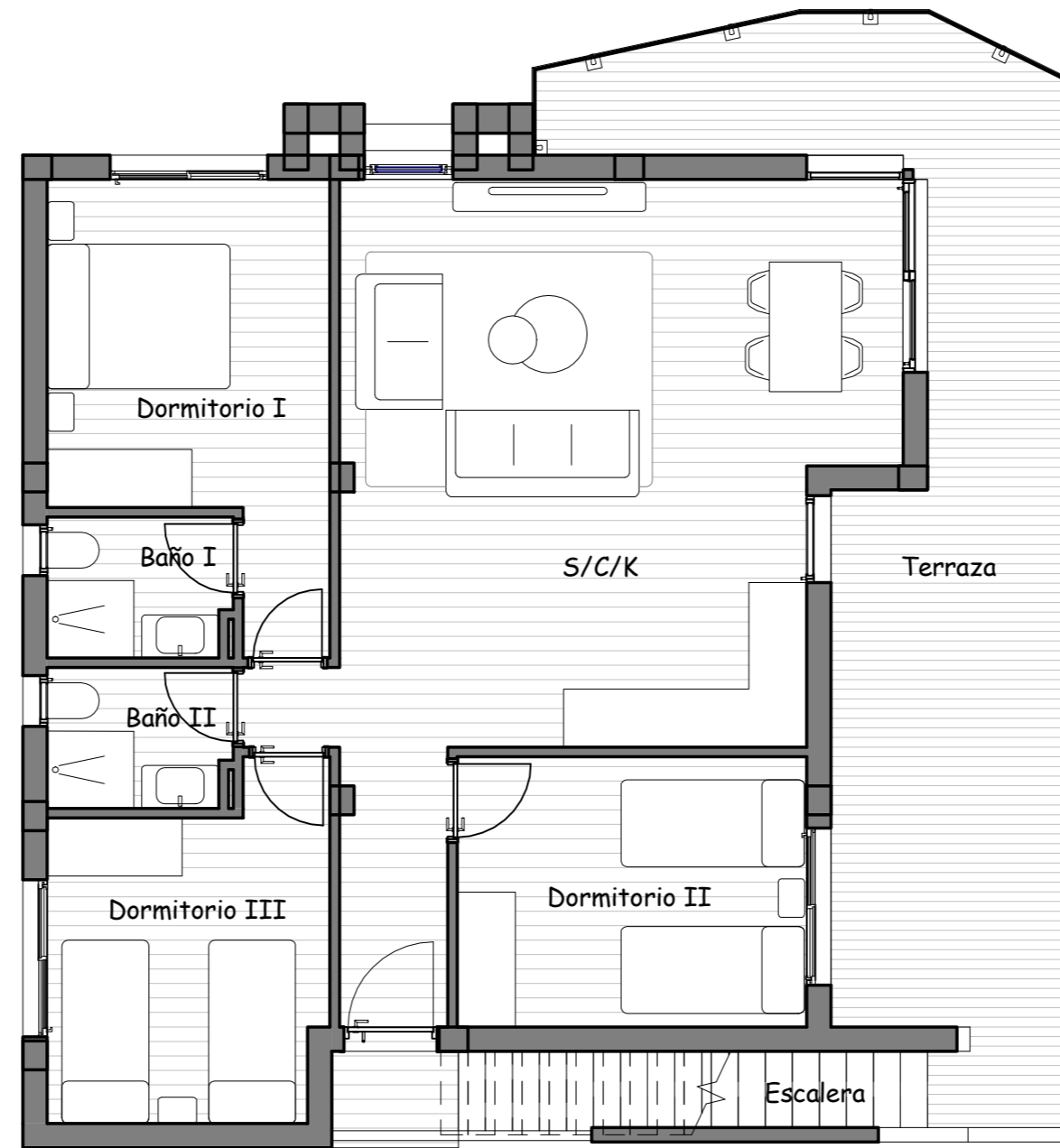


| SUPERFICIES | |
|----------------------|----------------------------|
| Salón/Comedor/Cocina | 39,95m ² |
| Dormitorio I | 13,51m ² |
| Dormitorio II | 12,16m ² |
| Dormitorio III | 11,40m ² |
| Baño I | |
| Baño II | |
| WC I | 3,48m ² |
| WC II | 3,48m ² |
| Terraza | 28,80m ² |
| Escalera | 5,40m ² |
| Solarium | 85,64m ² |
| TOTAL | 203,82m² |



RESIDENCIAL SAOCO

P1 N°602