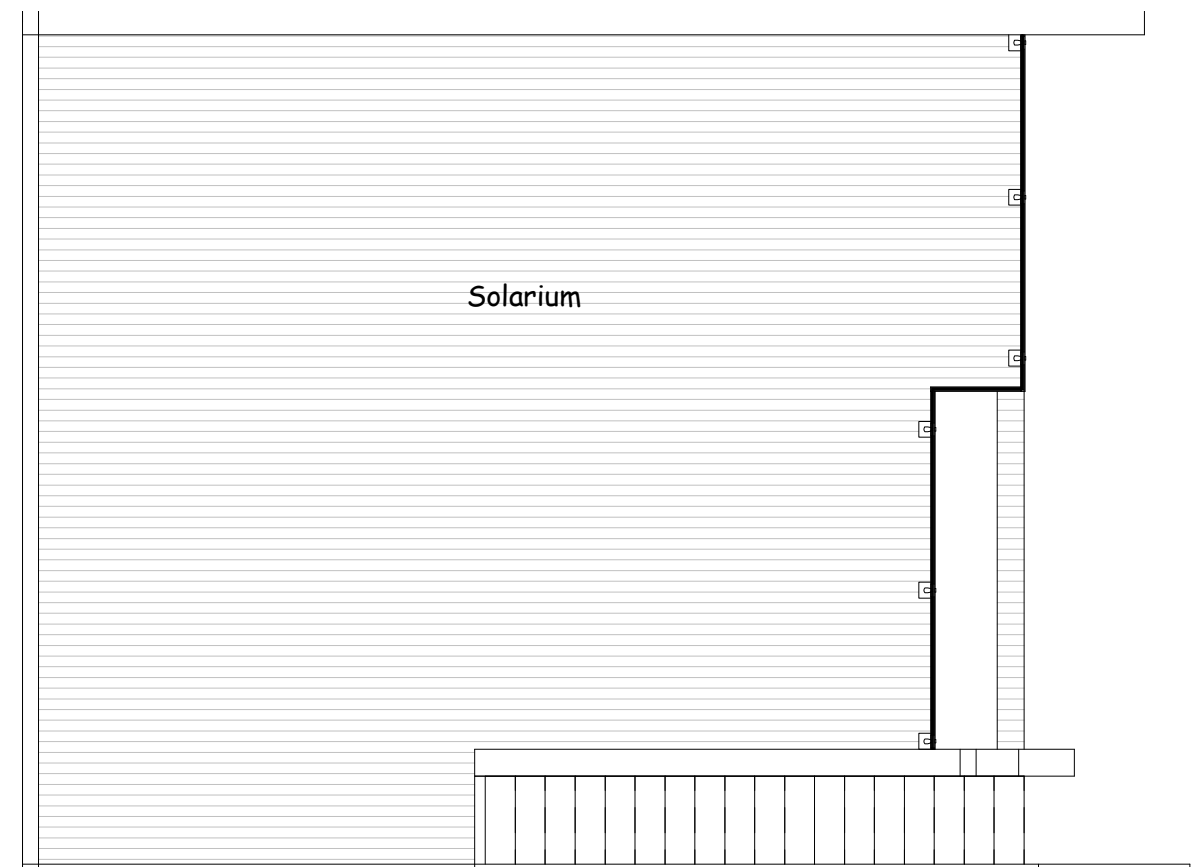
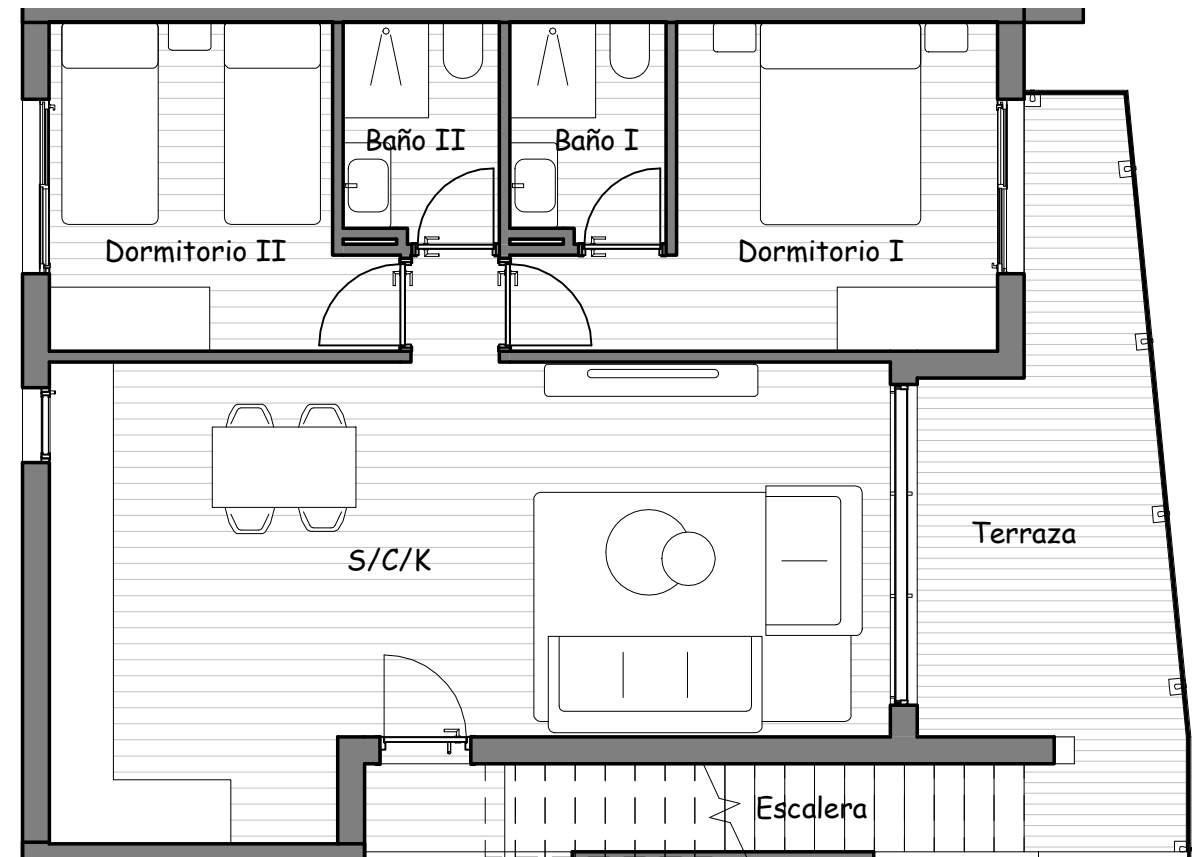


SUPERFICIES	
Salón/Comedor/Cocina	35,59m <sup>2</sup>
Dormitorio I	12,50m <sup>2</sup>
Dormitorio II	10,24m <sup>2</sup>
WC I	3,52m <sup>2</sup>
WC II	3,52m <sup>2</sup>
Terraza	12,98m <sup>2</sup>
Escalera	5,40m <sup>2</sup>
Solarium	68,21m <sup>2</sup>
<b>TOTAL</b>	<b>151,96m<sup>2</sup></b>



RESIDENCIAL SAOCO

P1 N°410