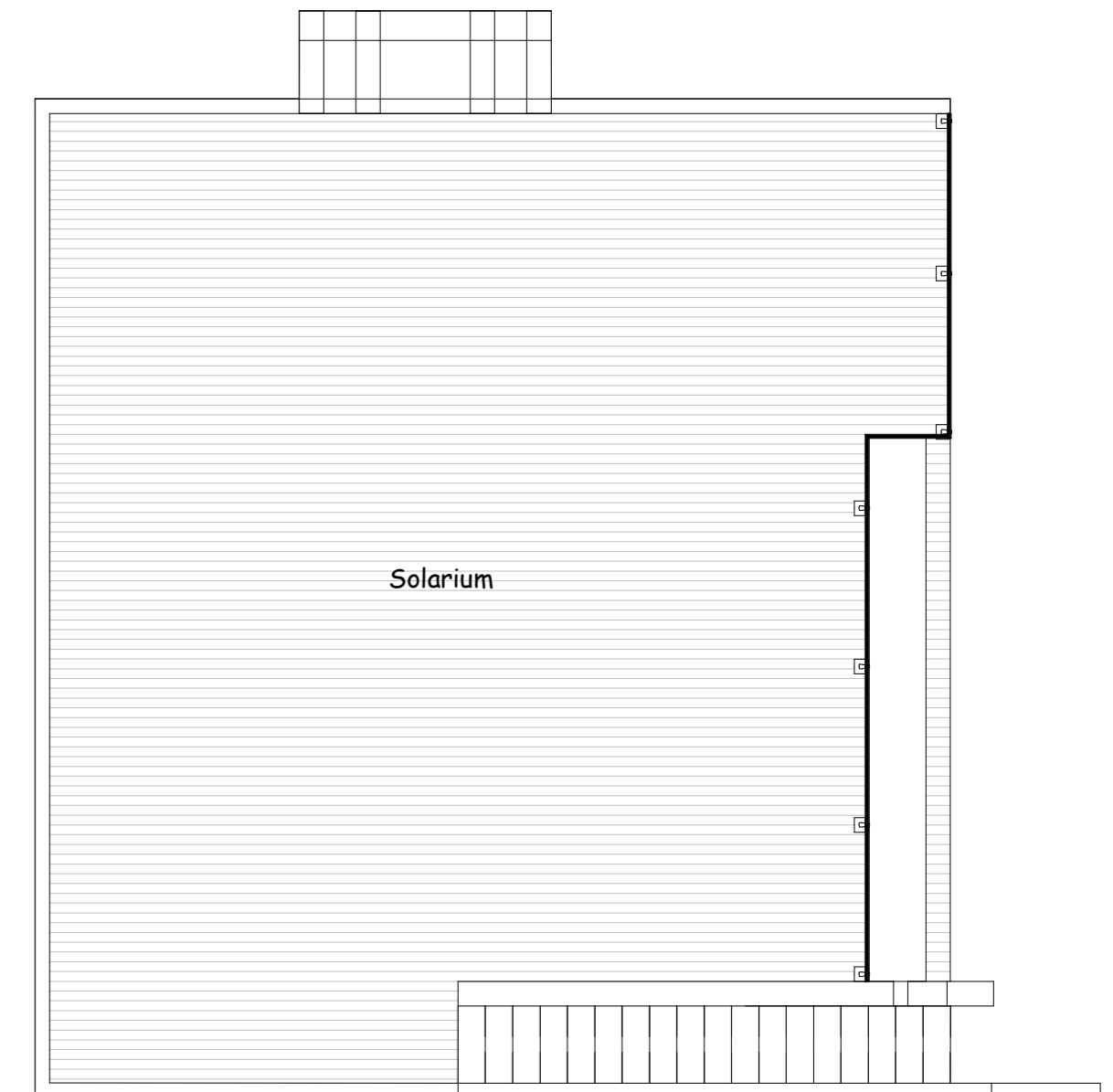
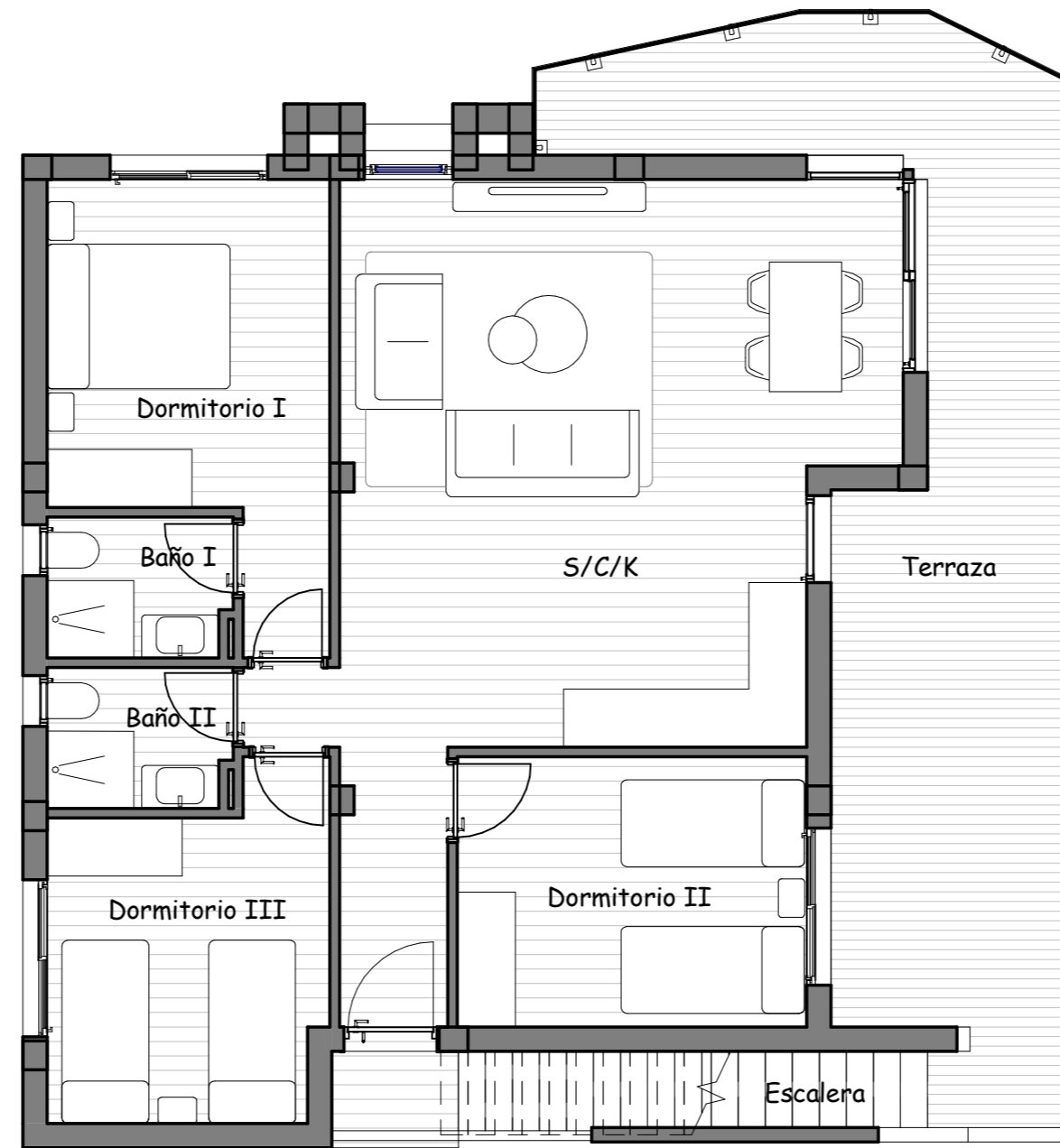


SUPERFICIES	
Salón/Comedor/Cocina	39,95m ²
Dormitorio I	13,51m ²
Dormitorio II	12,16m ²
Dormitorio III	11,40m ²
Baño I	
Baño II	
WC I	3,48m ²
WC II	3,48m ²
Terraza	28,80m ²
Escalera	5,40m ²
Solarium	85,64m ²
TOTAL	203,82m²



RESIDENCIAL SAOCO

P1 N°202