
SUPERFICIES

Salón/Comedor/Cocina 35,40m²

Dormitorio I 12,51m²

Dormitorio II 10,24m²

WC I 3,52m²

WC II 3,52m²

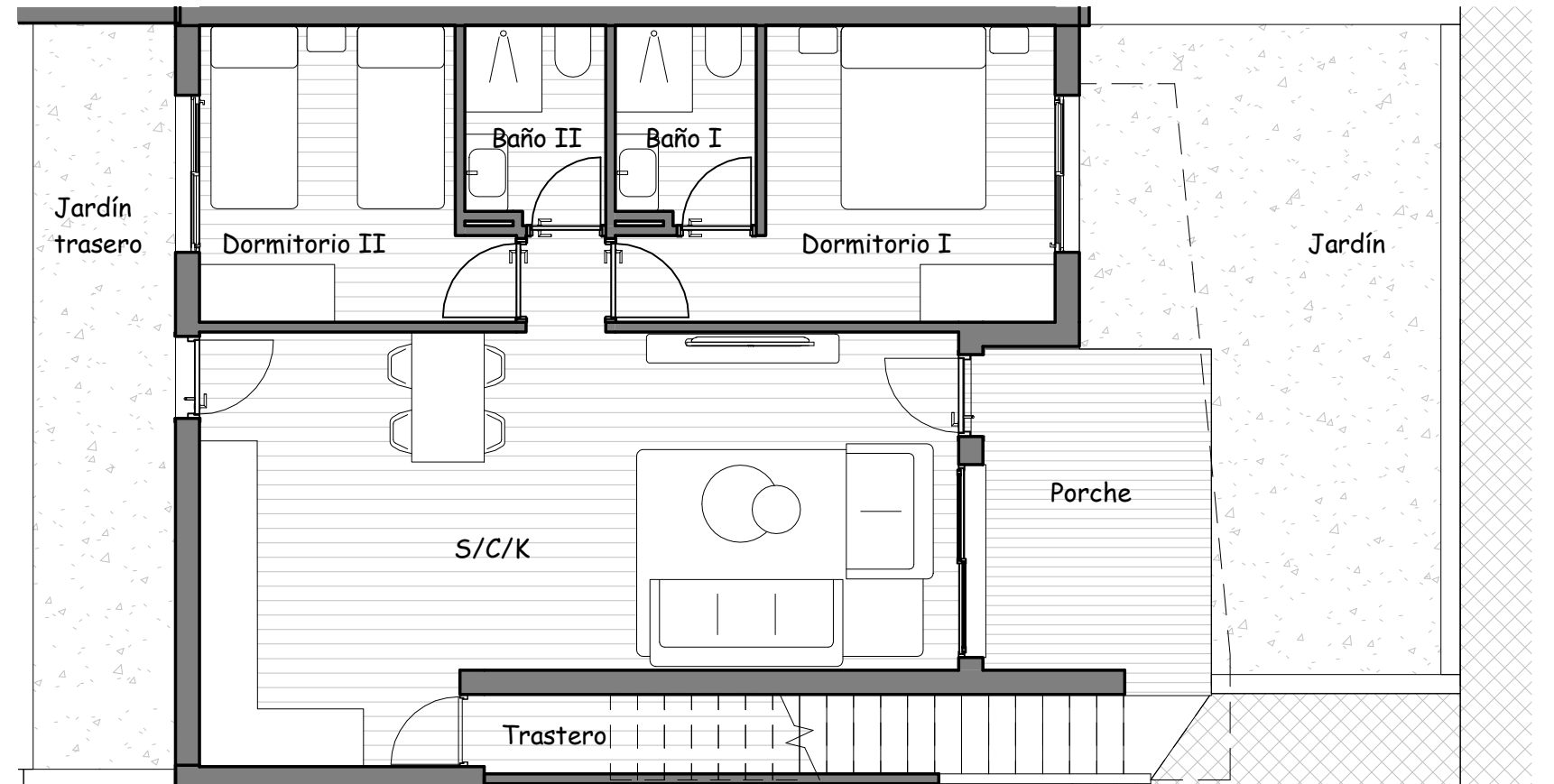
Trastero 3,57m²

Porche 11,49m²

Jardín 18,84m²

Jardín trasero 12,51m²

TOTAL 111.60m²



RESIDENCIAL SAOCO

PB N°409



esc 1/100