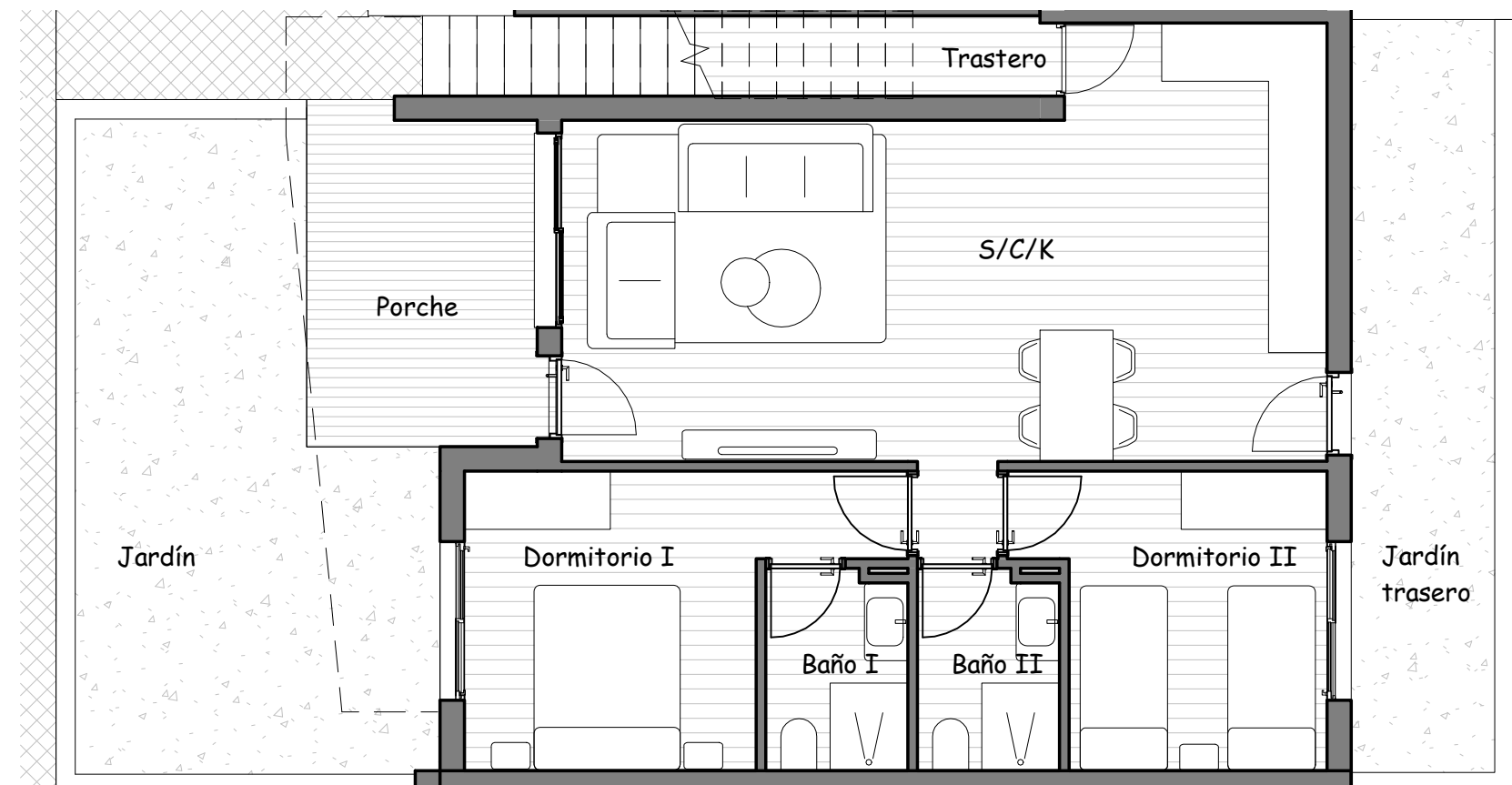


SUPERFICIES	
Salón/Comedor/Cocina	35,40m <sup>2</sup>
Dormitorio I	12,51m <sup>2</sup>
Dormitorio II	10,24m <sup>2</sup>
WC I	3,52m <sup>2</sup>
WC II	3,52m <sup>2</sup>
Trastero	3,57m <sup>2</sup>
Porche	11,49m <sup>2</sup>
Jardín	18,84m <sup>2</sup>
Jardín trasero	12,51m <sup>2</sup>
<b>TOTAL</b>	<b>111,60m<sup>2</sup></b>



RESIDENCIAL SAOCO

**PB N°303**



esc 1/100