

---

---

SUPERFICIES

---

Salón/Comedor/Cocina 35,40m<sup>2</sup>

---

Dormitorio I 12,51m<sup>2</sup>

---

Dormitorio II 10,24m<sup>2</sup>

---

WC I 3,52m<sup>2</sup>

---

WC II 3,52m<sup>2</sup>

---

Trastero 3,57m<sup>2</sup>

---

Porche 11,49m<sup>2</sup>

---

Jardín 18,84m<sup>2</sup>

---

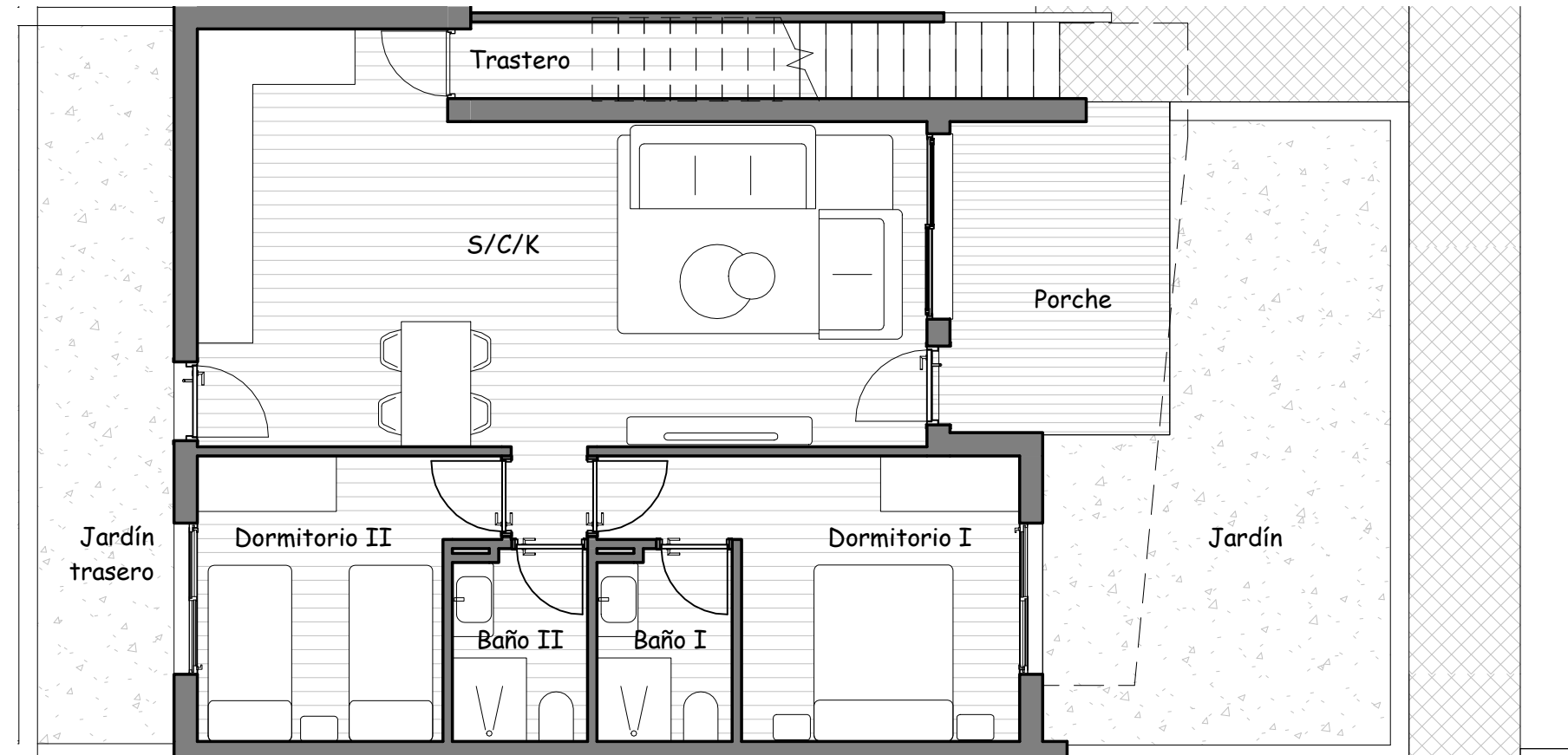
Jardín trasero 12,51m<sup>2</sup>

---

TOTAL 111,60m<sup>2</sup>

---

---



RESIDENCIAL SAOCO

PB N°403



esc 1/100