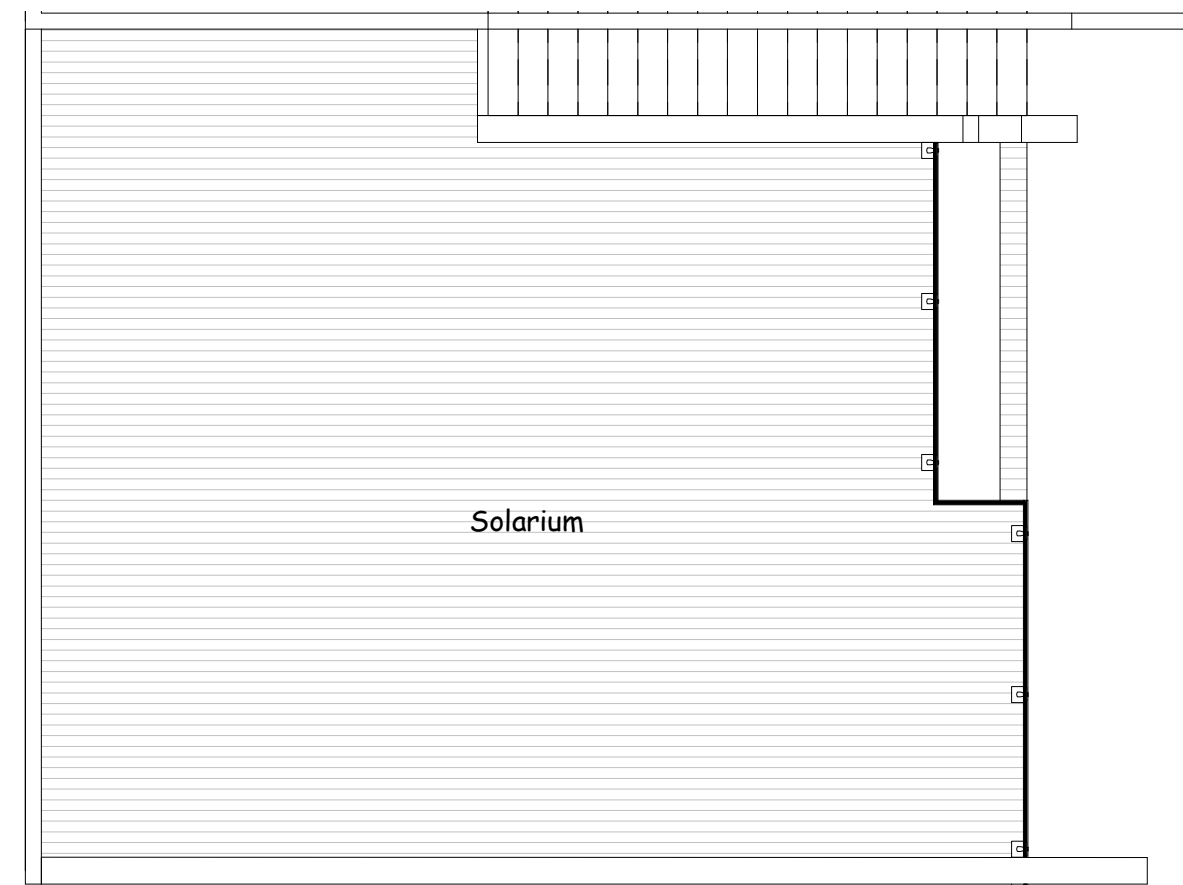
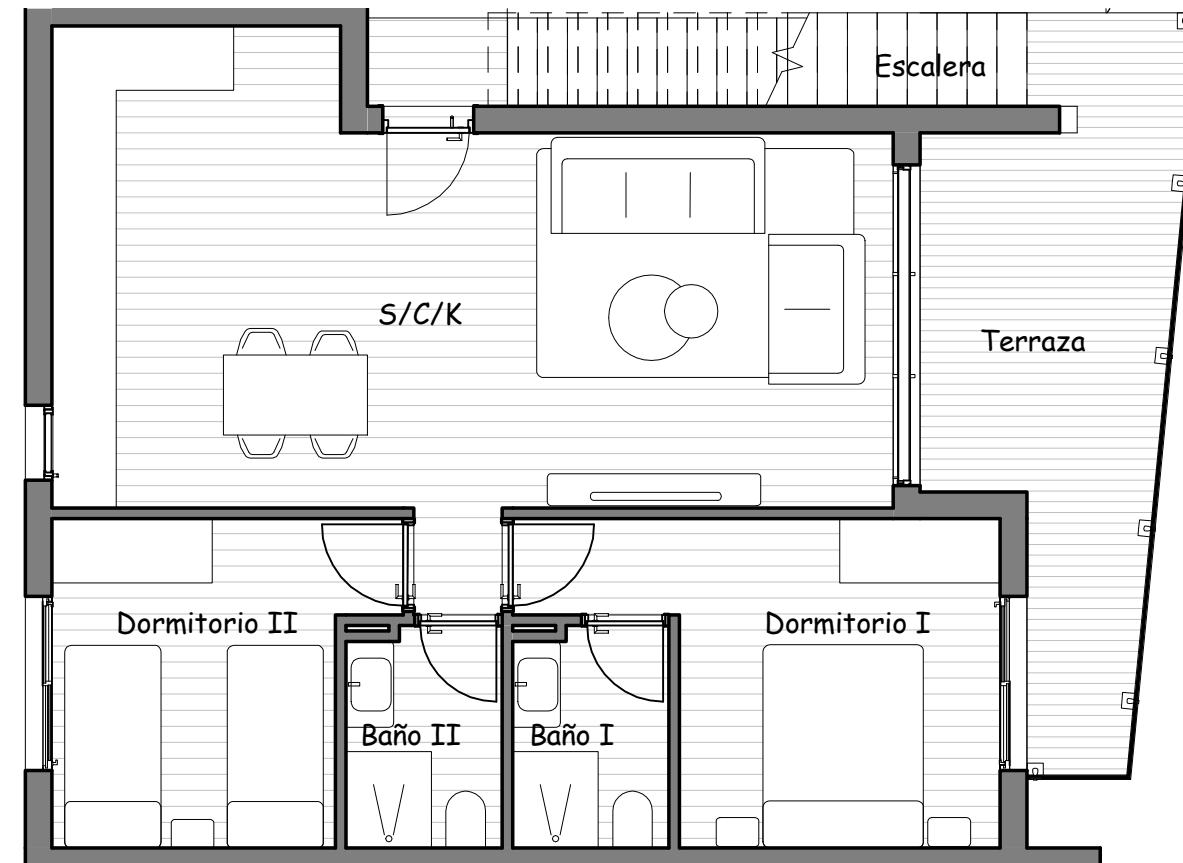


SUPERFICIES	
Salón/Comedor/Cocina	35,59m2
Dormitorio I	12,50m2
Dormitorio II	10,24m2
WC I	3,52m2
WC II	3,52m2
Terraza	12,98m2
Escalera	5,40m2
Solarium	68,21m2
TOTAL	151,96m2



RESIDENCIAL SAOCO

P1 N°604

