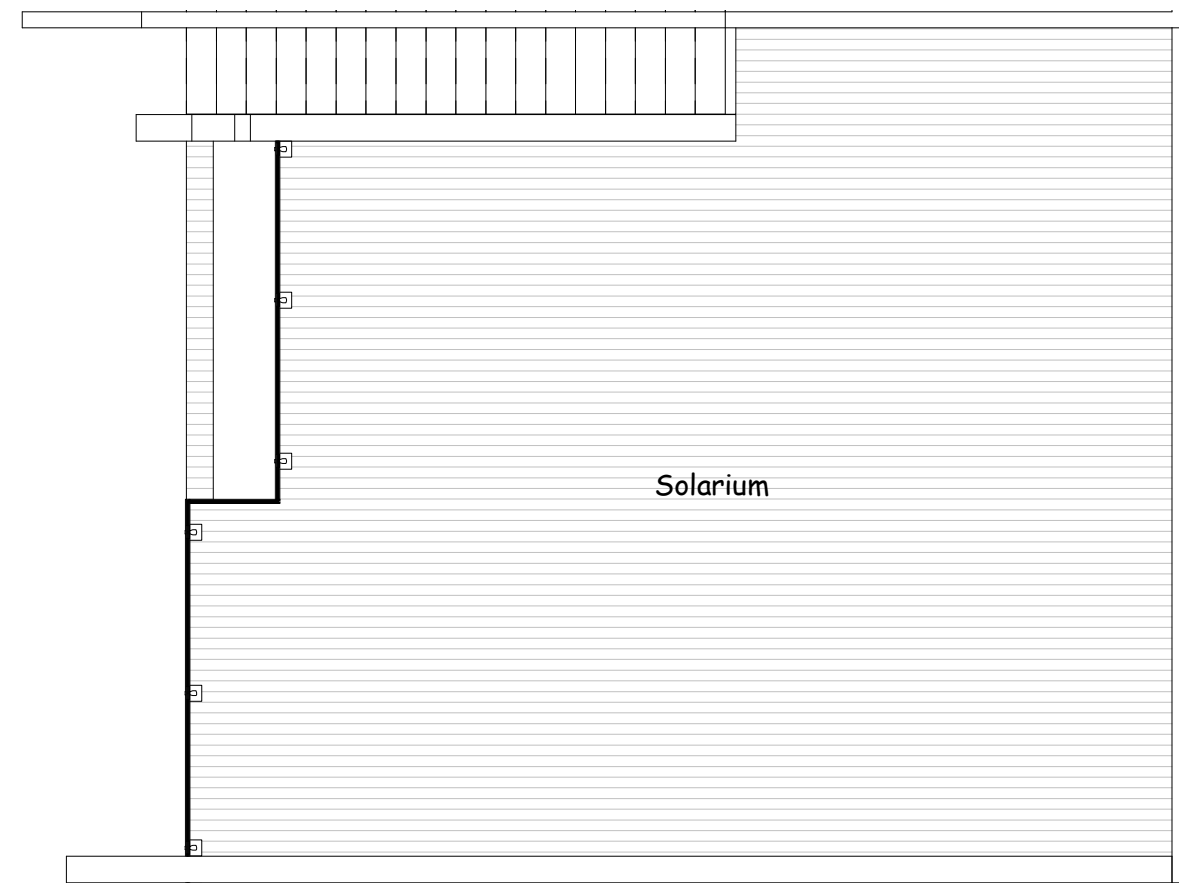
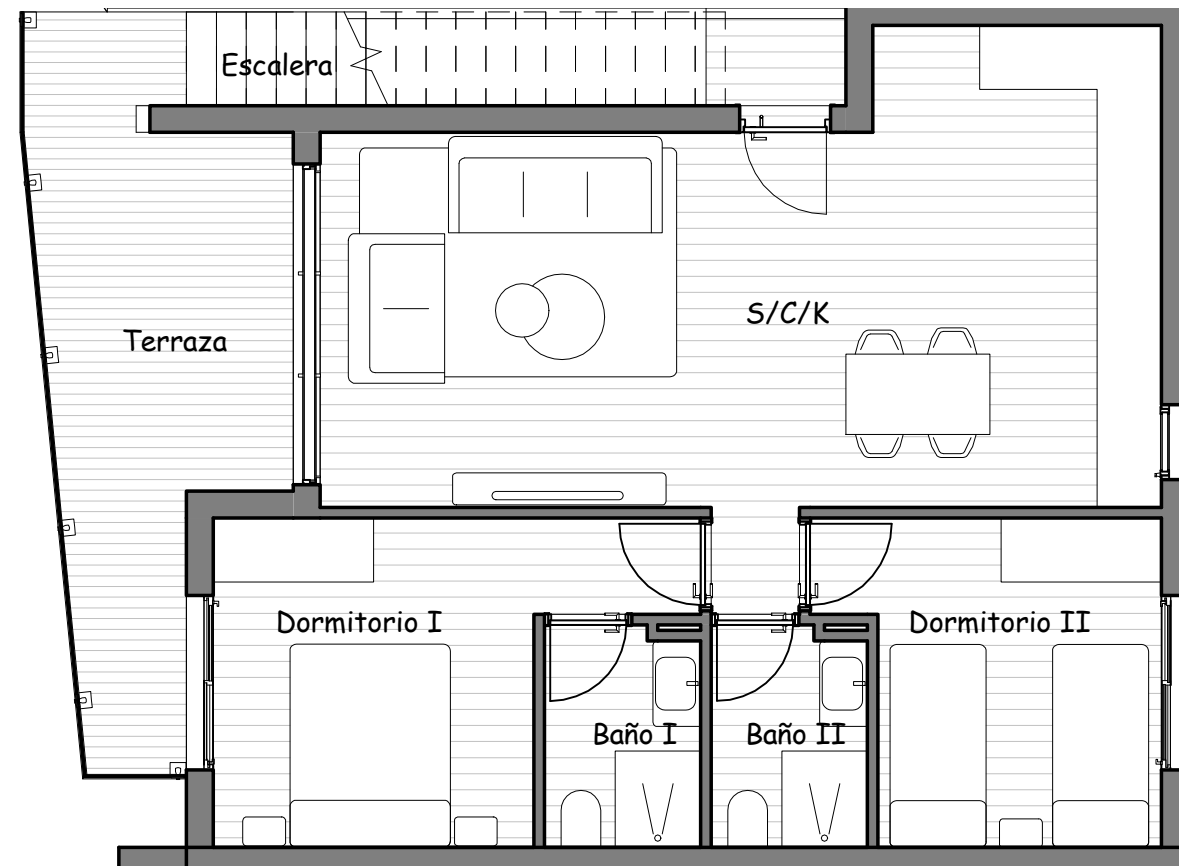


SUPERFICIES	
Salón/Comedor/Cocina	35,59m ²
Dormitorio I	12,50m ²
Dormitorio II	10,24m ²
WC I	3,52m ²
WC II	3,52m ²
Terraza	12,98m ²
Escalera	5,40m ²
Solarium	68,21m ²
TOTAL	151,96m²



RESIDENCIAL SAOCO

P1 N°504