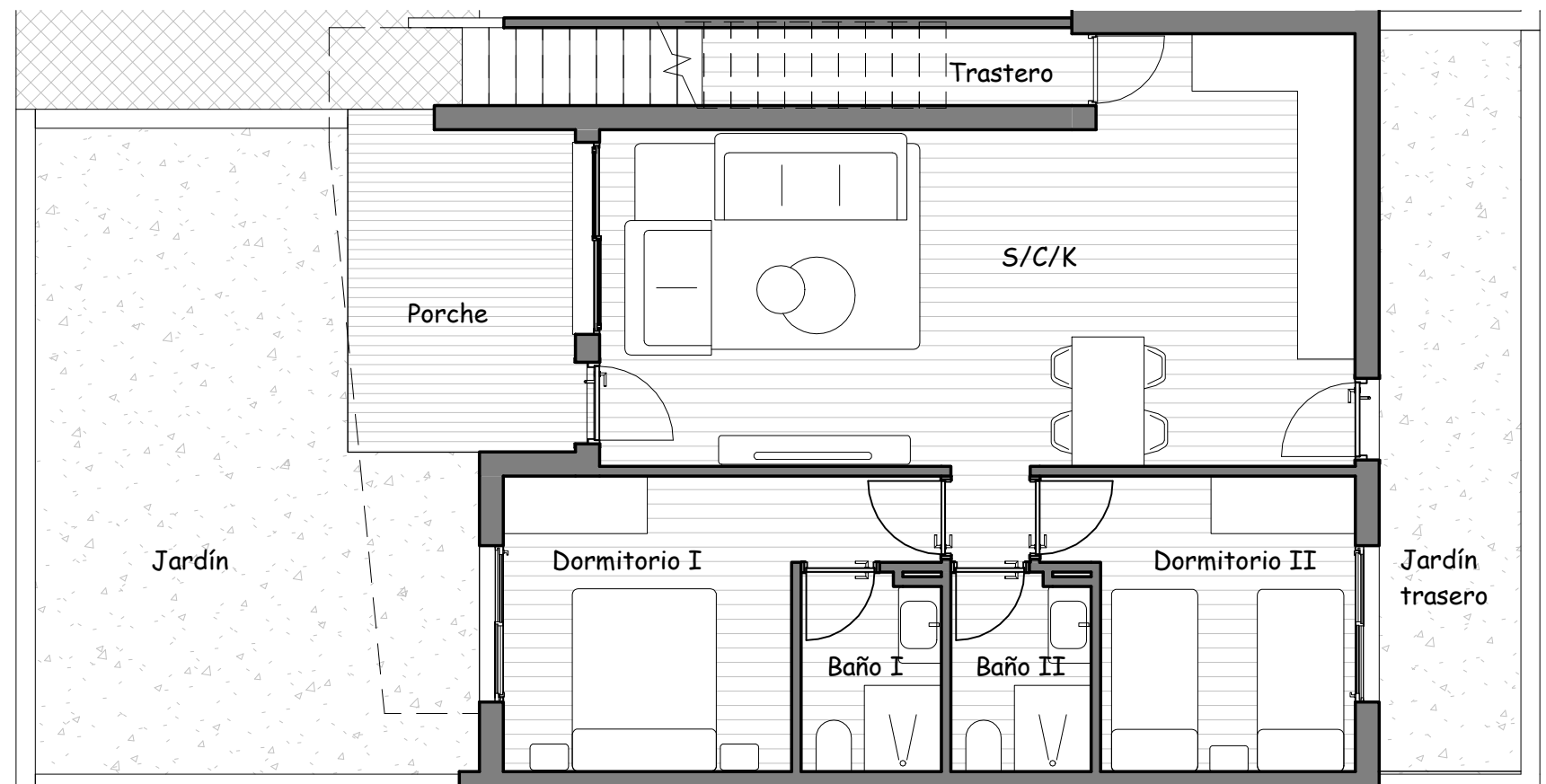


SUPERFICIES	
Salón/Comedor/Cocina	35,40m ²
Dormitorio I	12,51m ²
Dormitorio II	10,24m ²
WC I	3,52m ²
WC II	3,52m ²
Trastero	3,57m ²
Porche	11,49m ²
Jardín	25,99m ²
Jardín trasero	12,51m ²
TOTAL	118,75m²



RESIDENCIAL SAOCO

PB N°103



esc 1/100